

ENGLISH

CONGRATULATIONS!

You've purchased the finest in natural lighting technology with your new OttLite® product.

PRODUCT REGISTRATION FORM

Please complete the enclosed Product Registration Form and return it today by mail, or register online by going to: Ottlite.com/warranty

PRODUCT INSTRUCTIONS

NOTE: THIS UNIT IS FULLY ASSEMBLED. SEE BATTERY INSTALLATION TO INSTALL BATTERIES.

1. Remove LED Hands-Free Magnifier from packing and place on a flat steady surface (a table).
2. The OttLite LED Hands-Free Magnifier is powered by 3 AAA batteries (not included), alkaline or rechargeable batteries are recommended.
3. Install batteries per BATTERY INSTALLATION procedure.
4. Turn the LED light ON & OFF by using power switch (A) located below magnifier.

BATTERY INSTALLATION

1. Your OttLite LED Hands-Free Magnifier is powered by 3 AAA batteries. Light output will slowly diminish as the batteries lose energy.

WARNING: Keep away from children. If swallowed, promptly see doctor. Do not install backwards, charge, put in fire or mix with other battery types – may explode or leak causing injury.

2. To install batteries, slide battery compartment door (B) away from LED Hands-free Magnifier body (C) while slightly depressing the door near the tab (see diagram).
3. Install the 3 batteries as indicated by graphic inside the battery compartment and diagram provided. Battery negative terminals should point toward metal tab.
4. Replace battery compartment door (B) by laying it on open compartment and sliding door toward the body (C) to engage the tabs to the compartment, a click should be heard as it locks into place.

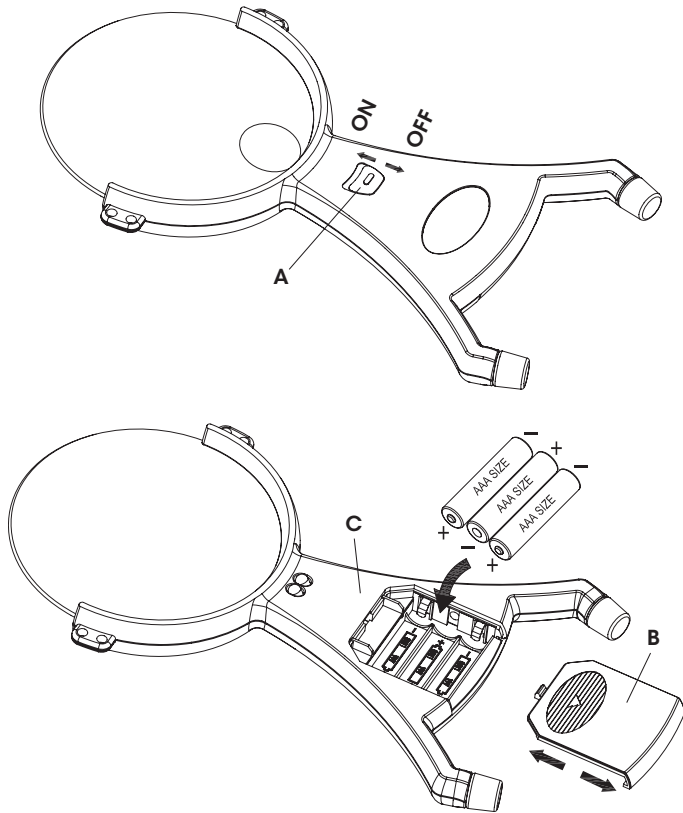
Enjoy your OttLite LED Hands-Free Magnifier!

NOTICE: Only replace batteries as a simultaneous set and do not mix with older batteries. Remove batteries if consumed or if the light has not been in use for a long period of time.

NOTE: The important safety instructions appearing in this instruction sheet are not meant to cover all possible conditions and situations that may occur. It must be understood that common sense, caution, and care must be used with any electrical product.

CAUTION: Risk of fire! Never place magnifier in direct sunlight.

CAUTION: Any change or modification to product not expressly recognized by OttLite Technologies voids OttLite's responsibility for proper function of product.



Disposal of Old Electrical & Electronic Equipment



This symbol on the product or on its packaging indicates that this product (including batteries) shall not be treated as household waste. Instead it shall be handed over to the applicable collection point for the recycling of electrical and electronic equipment. By ensuring this product is disposed of correctly, you will help prevent potential negative consequences for the environment and human health, which could otherwise be caused by inappropriate waste.

For more detailed information about recycling of this product, please contact your local Council, your household waste disposal service or the shop or source where you purchased the product.

DECLARATION OF CONFORMITY

Declares CE marking in accordance with the following EU directives and normative standards.

DIRECTIVES:	STANDARDS:
Low Voltage Directive 2006/95/EC	EN 60958-1:2008 Digital Audio Interface, General
	EN 60598-2-4:1997 General Purpose Luminaire; Portable Requirements
	EN 62115 :2005 Electric toys, Safety
	EN 55015:2006 Switches for Appliances; General Requirements
EMC Directive 2004/108/EC	EN 55015:2006 EMC for Luminaires
	EN 61547:2009 EMC Immunity
	EN 61000-3-2:2006 Current Harmonics
	EN 61000-3-3:2008 Voltage Fluctuations